

AxC-SWD5G Overview

Just as every AxC card within the Audio ToolBox range, the AxC-SWD5G can equally be used in AVBx3 or AVBx7 platforms.

Using one slot of either ToolBox, the AxC-SWD5G provides optical fiber into your network without additional external switch or media converter!



Key Features

- Using one Audio ToolBox slot for 10 gigabit Ethernet ports
- Two manageable linkable 5 ports full speed gigabit Ethernet switches
- 8 x RJ45 Gigabit connectors
- 2 x SFP cages for two additional compact hot-pluggable SFP (mini-GBIC) transceivers available in many formats:
 - Monomode or Multimode Fiber Gigabit SFP transceiver
 - Single Fiber Bi-Directional Gigabit SFP Transceiver
 - Copper/Ethernet Cabling Gigabit SFP transceiver
- Split configuration for redundancy management with 2 individual switches
- Internal Link configuration for 10 ports switch
- Remote management with AVS Monitor software through the IP Network
- Dedicated control page on AVS-Monitor for monitoring and controlling all the card parameters (Link/Split double switch, Connections)

Mechanical Specifications

200 x 100 x 40 mm: AuviTran Audio ToolBox platform AxC card format

AxC-SWD5G Applications

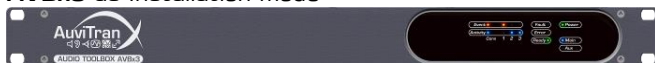
The AxC-SWD5G provides 8 x RJ45 Gigabit Ethernet Port, plus 2 x SFP (Small Form-Factor Pluggable) cages for direct optical fiber connection via optional monomode or multimode SFP also called mini-GBIC (Gigabit Interface Converter) modules.

- AxC-SWD5G can be configured as one unified Ethernet switch featuring 10 Gigabit ports, or two physically independent full speed Ethernet switches, each of them offering 5 Gigabit ports for split redundancy network.
- Thanks to AVS-Monitor, the AxC-SWD5G can be fully and remotely managed, using either: IP, Dante or EtherSound networks. AVS-Monitor will also provide statistics on any port, an easy way to dynamically check and analyse, in real time, the capability of the links.
- VLAN can be configured on any port to use multi-protocol (DANTE, ES100, COBRANET, DMX/Ethernet...) over a same optical fiber at same time on the AxC-SWD5G.
- Direct monomode / multimode optical fiber connection(s) to Audio ToolBox AVBx3 or AVBx7 without external switch or media converter.
- Replacement of up to Two Ethernet gigabit switches using only one Audio ToolBox slot for saving space in a rack.

Audio ToolBox Platform Overview

Smart, expandable and sustainable: meet AuviTran's versatile and flexible platforms bringing convergence among network technologies and audio interfaces. With two 19" rack chassis AVBx3 and AVBx7 both available in StageBox or Installation modes, plus 14 interface cards, build the configuration you need.

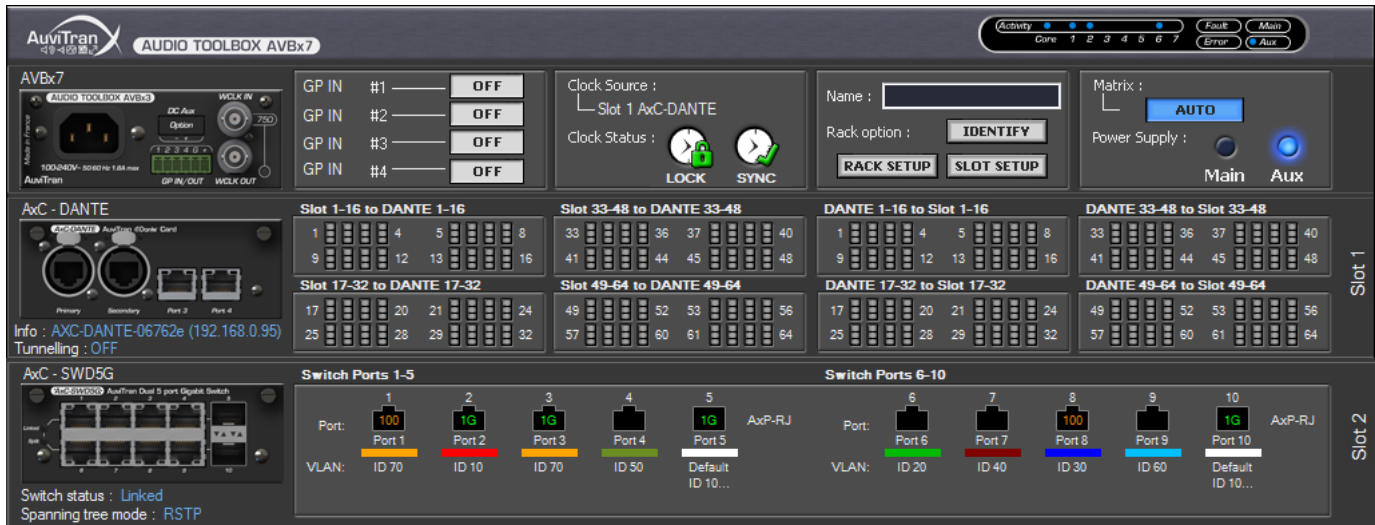
AVBx3 as Installation mode



AVBx7 as StageBox mode



AVS-Monitor Software control page



Technical Specifications

General	
Size	200 mm x 100 mm x 40 mm –AuviTran Audio ToolBox platform format
Power Supply	+12V / +3.3V - Through AuviTran Audio ToolBox backplane
Storage:	- 5°C to 70°C / 0% to 95% (non-condensing)
Temp/Humidity	
Operating:	0 °C to 50°C / 5% to 90% (non-condensing)
Temp/Humidity	
Connectors	8 x RJ45 connectors, 2x SFP/GBIC connectors
Switch and CPU Specifications	
Processor	Dual Core ARM processor @ 204MHz, 192KB SRAM, 4MB flash, 8MB SDRAM
Dedicated Switch memory	2 x 128KB packet buffer size with a data bus of 256 bits wide
Port Speed	Auto Neg. Or forced at 1Gigabit/s, 100MBit/s, 10MBit/s Full/Half duplex mode
Auto MDIX	Automatically adjusts for straight-through or crossover cables on all RJ45 ports
VLAN capability	Up to 32 independent configurable VLAN
Performances	1000 MB latency < 2.9 μs (64-byte packets) 100 Mb Latency < 4.9 μs (64-byte packets) MAC address table size of 2 x 8192 entries
Integration Environment	
Audio ToolBox platform	AxC-SWD5G can be inserted in any slot of any AuviTran Audio ToolBox platform
AVS-Monitor	AVS-Monitor enables to remotely set, control and monitor a Dante or an EtherSound network and provides enhanced control pages to manage the AxP-SWD5G card specific parameters
Supported OS	Windows 8/7/Vista/XP for 32 or 64 bit versions

Part number

AxC-SWD5G	Dual linkable 5 Port Gigabit full speed switch for AuviTran Audio ToolBox
AxP-BD*	Single fiber bidirectional down monomode SFP (mini-GBIC) transceiver with half LC connector
AxP-BU*	Single fiber bidirectional up monomode SFP (mini-GBIC) transceiver with half LC connector
AxP-SX	Double fiber multimode SFP (mini-GBIC) transceiver with LC connector
AxP-LX	Double fiber monomode SFP (mini-GBIC) transceiver with LC connector
AxP-RJ	Copper/Ethernet cabling SFP (mini-GBIC) transceiver with RJ45 connector
*Notice	<i>AxP-BD and AxP-BU must be coupled as they use different wave lengths for bidirectional transmission/reception to work together in a single optical fiber.</i>