

## AxC-DANTE Overview

Just like all of the AxC cards within the Audio ToolBox range, the AxC-DANTE can be used within the AVBx3 or the AVBx7 platforms.

Using only one slot of the ToolBox, the AxC-DANTE allows to control Dante networks, and also to bridge them with other network configurations.

## Key Features

- Using only one Audio ToolBox slot, the AxC-DANTE can be used either with AVBx3 or AVBx7 platforms
- 64 Dante™ inputs and 64 Dante™ outputs
- One integrated switch featuring 4x gigabit ports
- Remote management with AVS-Monitor software
- Two EtherCon connectors (Primary/Secondary) for connection in switch or redundant mode
- Two Ethernet RJ45 connectors (port 3 and port 4) to be used as integrated Gigabit switch ports

## Audio ToolBox Platform Overview

Smart, expandable and sustainable: meet AuviTran's versatile and flexible platforms that brings convergence among network technologies and audio interfaces.

With two 19" rack chassis AVBx3 and AVBx7 both available in StageBox or Installation modes, plus 14 interface cards, build the configuration you need.

AVBx3 as Installation mode




AVBx7 as StageBox mode



## Mechanical Specifications

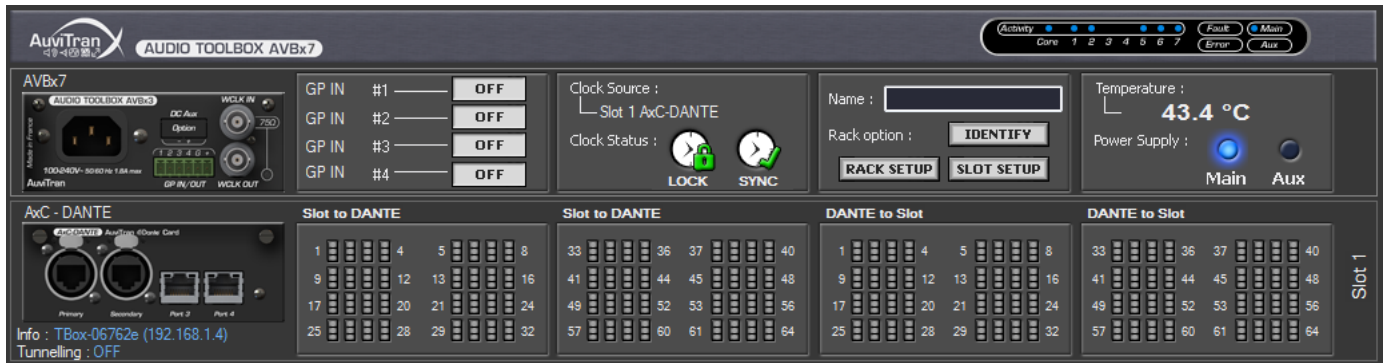
200 x 100 x 40 mm: AuviTran Audio ToolBox platform AxC card format

## AxC-DANTE Applications

 Combined with other AuviTran Audio ToolBox cards, the AxC-DANTE card opens exciting possibilities to the professional audio systems:

- Can be transformed into a flexible analog StageBox, when combined with a ToolBox (AVBx3 or AVBx7), AxC-AX4M high class mic/line preamps cards and AxC-AX4O analog output card.
- Up to 24 analog mic inputs can be monitored directly from a Yamaha Dante console, just as RIO™ Stagebox.
- Dante bridges in combination with any other network AxC card such as Dante-AVB, Dante-MADI, Dante-EtherSound bridges, thus smartly mixing connectivity.
- Can work as a Virtual Soundcard with any standard ASIO, WDM or Core Audio interface.

AVS-Monitor Software control page



Technical Specifications

AxC-DANTE: Dante card for the AuviTran Audio ToolBox platform

Size	200 mm x 100 mm x 40 mm – Format AuviTran Audio ToolBox platform cards
Power Supply	+12V / +3.3V - Through AuviTran Audio ToolBox backplane
Storage: Temp/Humidity	- 5°C to 70°C / 0% to 95% (non-condensing)
Operating: Temp/Humidity	0 °C to 50°C / 5% to 90% (non-condensing)
Connectors	2 x Neutrik EtherCon RJ45-XLR female connectors 2 x RJ45 connectors
Dante Operation modes	Switch – Integrated Gigabit switch Redundant with Primary and Secondary ports, replicated on ports 3 and 4
Audio Outputs	Up to 64 channels
Audio inputs	Up to 64 channels
HA remote modes	Yamaha Rio CL console / Audinate MY16AUD
Sample format	24/32 bits
Sample rate	44.1 kHz / 48 kHz / 88.2 kHz / 96 kHz
Synchronization	Automatic from Dante network

Control and monitoring Environment

AVS-Monitor	AVS-Monitor enables to remotely set, control and monitor an EtherSound network and provides enhanced control pages to manage the specific parameters of cards inserted in the different slots
Audinate Dante Controller	For audio patch of any Dante device, and additional features: multicast/unicast, redundant mode or switch mode
Audinate Dante Virtual Sound card	The optional Dante Virtual soundcard software allows your PC/Mac to connect to a Dante audio network. Note: a license is required to use this feature – please refer to Audinate’s website for more information

V2-022020

Part number

AxC-DANTE Dante™ card for AuviTran Audio ToolBox